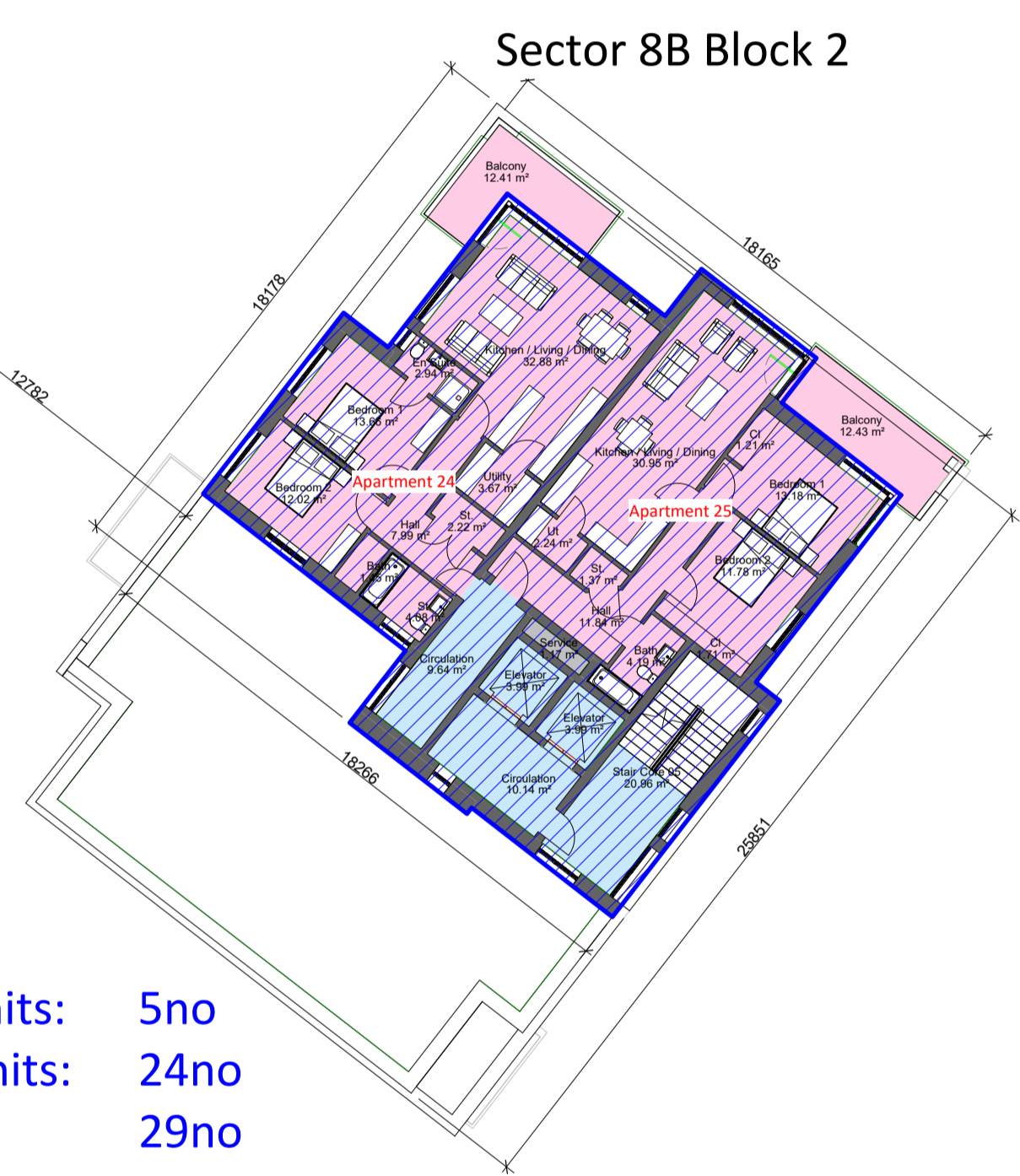
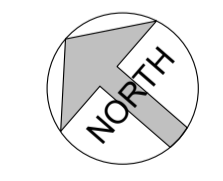
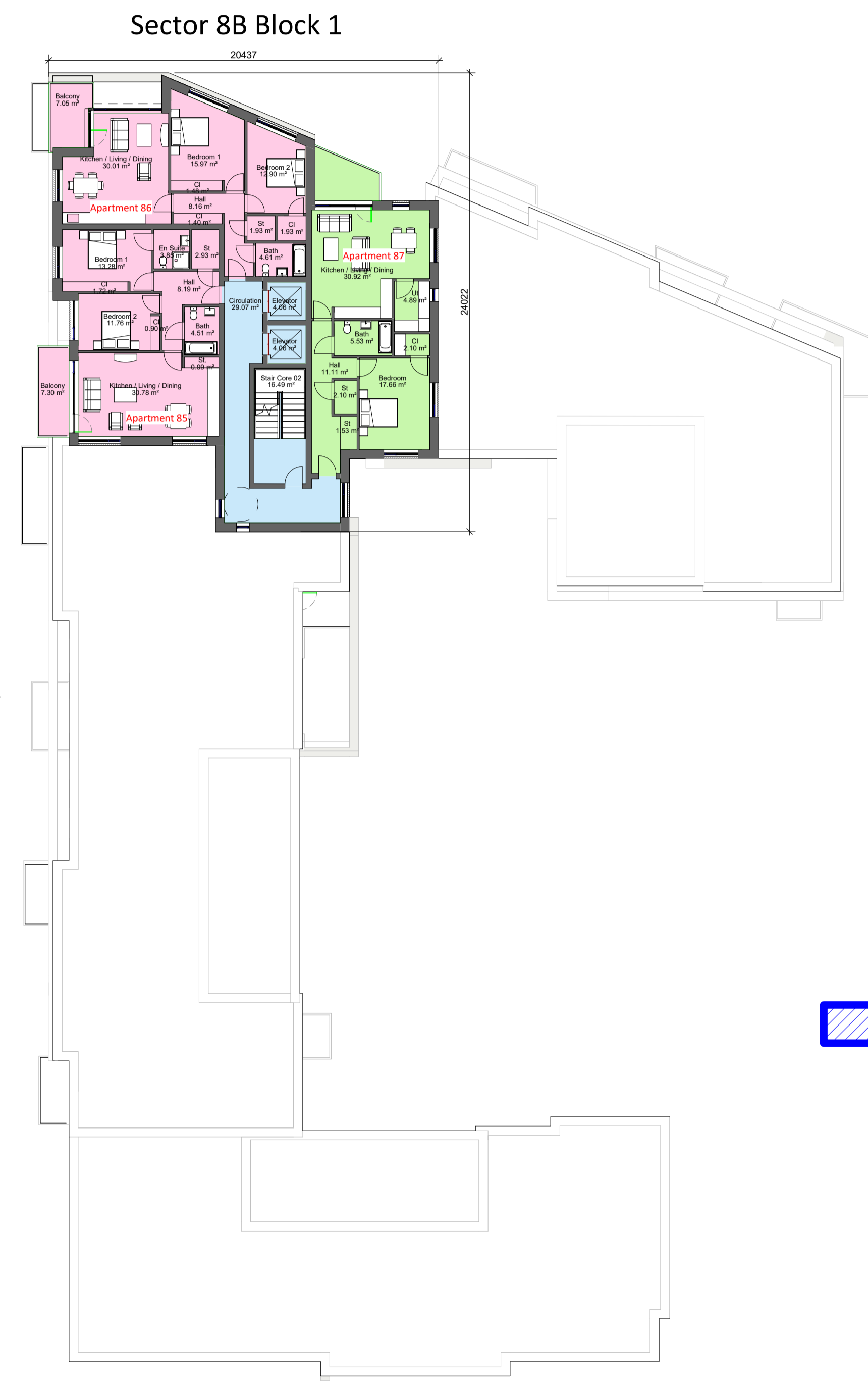
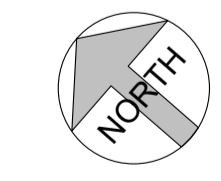


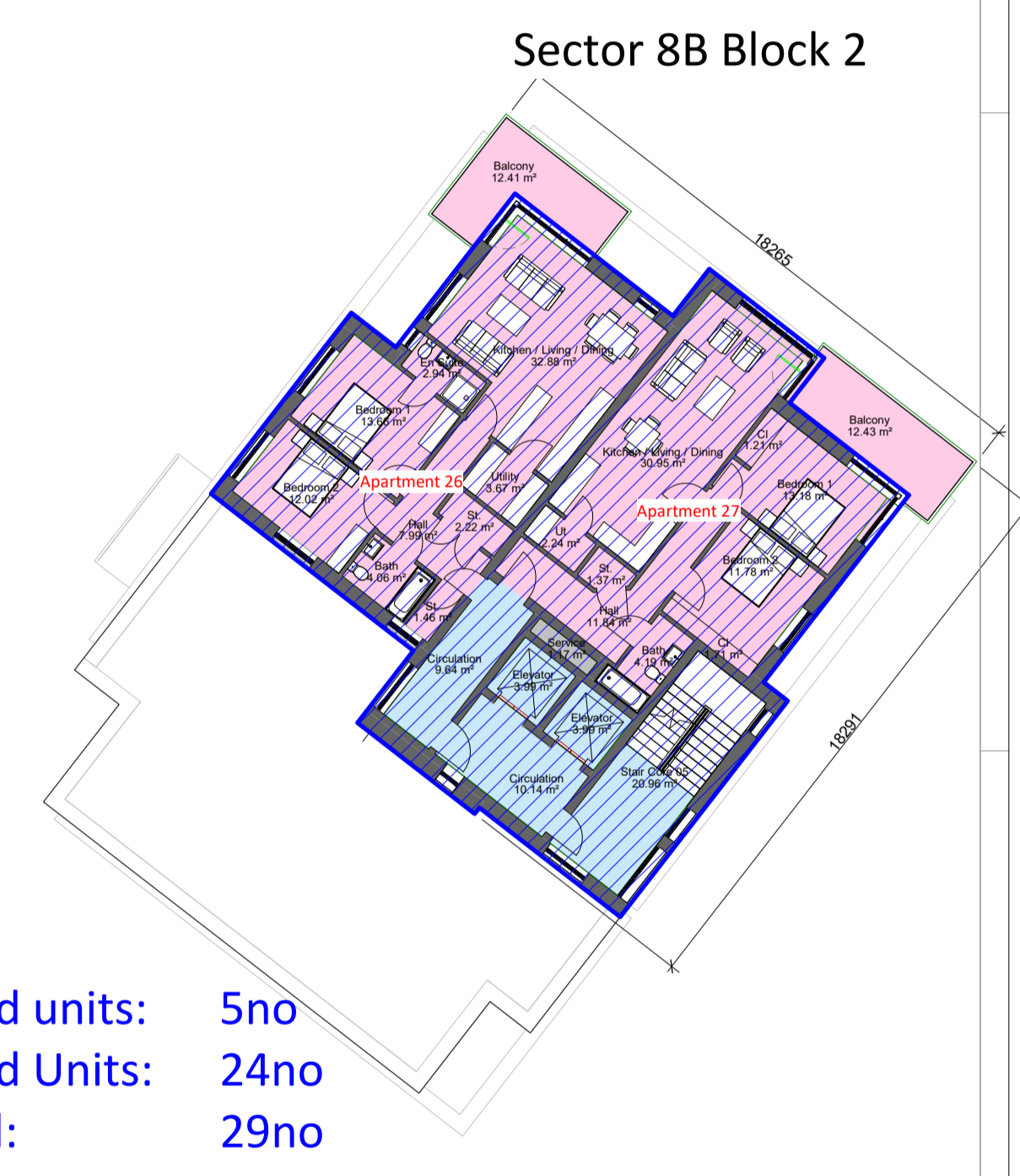
**06 Sixth Floor Plan**  
2 1 : 200



**07 Seventh Floor Plan**  
1 1 : 200



1-Bed units: 5no  
2-Bed Units: 24no  
Total: 29no



1-Bed units: 5no  
2-Bed Units: 24no  
Total: 29no

Community rooms (sector 8B) 1 room  
Bicycle Storage (sector 8B) at g.l. 120 units

Apartment Schedule Sector 8b						
StairCore	Studio	1 Bed Apt	2 Bed 3 Person	2 Bed 4 Person	3 Bedroom	Total
0	0	0	0	0	0	0
1	0	4	4	5	2	15
2	0	5	0	34	0	39
3	6	5	6	6	0	23
4	5	5	0	4	5	19
5	0	5	0	24	0	29
	11	24	10	73	7	125

Rev. No.	Date	By	Description	STATUS SUITABILITY CODES	NOTES:
P01	17/12/2021		Issued for Planning	S0 Work in progress	
P04	11/03/2022		Issued for Planning	S1 Shared - for Co-ordination S2 Shared - for Information S3 Shared - for Review & Comment S4 Shared - for Stage Approval S6 Shared - for Project Information Model S7 Shared - for Asset Information Model	
				D1 Suitable for Costing D2 Suitable for Tender D3 Suitable for Contractor Design D4 Suitable for Procurement	
				An Published - Approved & Accepted Complete Bn Published - Partially signed off with comments CR Published - Construction Record	

**CCH ARCHITECTS**  
Architects • Interior Designers • Masterplanners  
Lacken House, Dublin Road, Kilkenny R95 KF34  
Tel +353 (0)56 776 1591  
E-Mail: info@cch-architects.com

NOTE: All dimensions to be checked on site. Do not scale this drawing. Use figured dimensions only. To be read in conjunction with all other relevant project drawings and documents including from other consultants.

stage  
**PLANNING**

status	revision no.
	P04
project ref.	20003

CLIENT	Lismore Homes Ltd
PROJECT	GA2: Residential Development Baldoyle
DWG TITLE	Sector 8B_Sixth Floor & Seventh Floor
Date	17/12/21
Drawn	R. RYAN
Scale	1 : 200
drawing no.	BALN5 -CCH -00 -ZZ -DR -A -188

© Drawing copyright CCH Architects Ltd. Not to be copied, reproduced or distributed without prior consent of CCH Architects Ltd.